

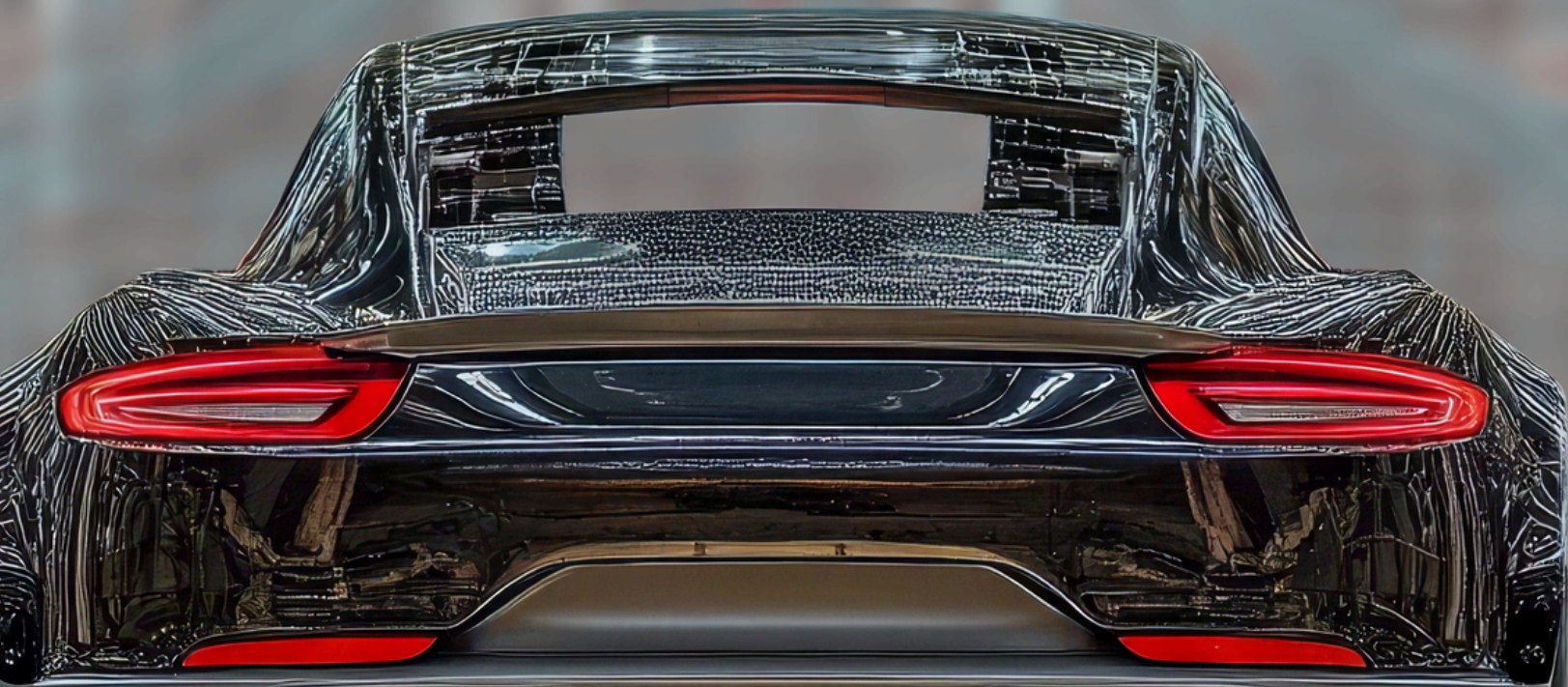


**Color Compass
Corporation**



Canada's Refinish & Equipment Leaders

Spring / Summer Product Highlights...2026





**Color Compass
Corporation**

**Canada's Leader of Refinishing
Products...Proudly representing these major
coating manufactures...**

BASF

We create chemistry



AkzoNobel

LUMABASE™
PERFORMANCE COATINGS



SHERWIN-WILLIAMS®

PPG

A
AXALTA™

**Paint Manufacturers availability may be restricted in some regions.*

SATA



**Color Compass
Corporation**

SATA celebrates 100 years of spray gun history – with a limited special edition package. The jet X 100 Years Edition features the original technical drawing of our very first spray gun from 1925 – a fascinating fusion of tradition and innovation.

ONE OF KIND...VIP Package

Includes the following products:

- jet X - 100 Years Edition Gun
- SATAjet 100 B - 100 Years Edition Gun
- SATAminijet 4400 B - 100 Years Edition Gun
- Aluminium gravity flow cup -100 Years Edition Gun
- Book 100 Years SATA spray guns
- SATA metal sign - 100 Years Edition
- SATA paint suit - 100 Years Edition
- SATA T-Shirt - 100 Years Edition
- Leather keychain - 100 Years Edition
- SATA dust cloth

*Limited inventory and while quantities last



- Kit 1: SAT50206** - Minijet 4400 B RP 1.2 SR, Jet 100B RP 1.4, Jet XRP 10x40
Kit 2: SAT50200 - Minijet 4400 B RP 1.2 SR, Jet 100B RP 1.4, Jet XRP 1.3I
Kit 3: SAT50203 - Minijet 4400 B RP 1.2 SR, Jet 100B RP 1.4, Jet XRP 1.3O

Ask your Color Compass representative for pricing.

www.colorcompass.com



Color Compass Corporation

LUMABASE
PERFORMANCE COATINGS

Lumabase offers high-performance undercoats, basecoats, clearcoats, reducers, and color-matching tools, all engineered to reduce rework and improve workflow.

The system's undercoats **provide excellent adhesion, corrosion protection, fast drying, and easy sanding, supporting strong color holdout and long-lasting gloss retention.** Lumabase also features an advanced basecoat and clearcoat lineup, including products known for smooth lay-down, reliable flow, and durable, factory-quality finishes, ideal for both spot repairs and full refinish work.

Backed by a wide range of professional toners and integrated color-match software for precise OEM-accurate matching, Lumabase **enables technicians to achieve consistent, high-quality results while maintaining controlled material costs** - making it a smart, efficient, and profit-driven refinish solution for today's production-focused repair facilities.

Lumabase LV is a complete refinish system that presents a simplified approach where fewer components are needed, helping in the ease of use and reduction of inventory.

LUMABASE
PERFORMANCE COATINGS





Primers

Lumabase LV offers a full line of Low-VOC undercoatings from DTM corrosion protection primers to high build primers and sealers with excellent sanding and color hold out properties.



Basecoats

A versatile and compact line of Low-VOC toners allows you to achieve thousands of OEM and custom colors while simplifying your inventory needs.



Clearcoats

Lumabase Low-VOC clearcoats provide great leveling, flow and chemical resistance properties as well as exceptional gloss, UV resistance and durability.



Reducers

Designed for peak performance with Lumabase LV primers, sealers, basecoat, and clearcoats.

Lumabase LV Color Systems

Lumabase LV color software allows you to accurately and quickly match OEM colors from over 90 manufacturers. Linked to a scale - The Lumabase color software will assist you while mixing and allow you to make adjustments for under and over mixing as you go.





**Color Compass
Corporation**

PRO Sand®
COLLISION REPAIR ABRASIVE PRODUCTS

PRO-PCS™ PRO CUP SYSTEM

- INCREASED PRODUCTIVITY
- EASY CLEAN UP
- FAST CYCLE TIMES
- QUALITY MATERIALS



Waterborne KIT 180ML - PCS180-125
Waterborne KIT 400ML - PCS400-125
Waterborne KIT 650ML - PCS650-125
Waterborne KIT 850ML - PCS850-125

SOLVENT KIT 180ML - PCS180-190
SOLVENT KIT 400ML - PCS400-190
SOLVENT KIT 650ML - PCS650-190
SOLVENT KIT 850ML - PCS850-190



Waterborne

Solvent

INCLUDES: 50 LINERS, 50 LIDS, 20 PLUGS, 1 RIGID CUP & 1 COLLAR
Dispensers and Gun Adaptors available.

Ask your Color Compass representative for pricing.

www.colorcompass.com



Overspray Protective Sheeting

Key Features:

- **Clear Visibility:** Allows for easy inspection and precise application without removing the sheeting.
- **Superior Adhesion:** Stays securely in place, even in high-traffic areas, preventing any accidental overspray.
- **Durable Material:** Made from robust, tear-resistant plastic that withstands the rigors of a busy collision center.
- **Easy Application and Removal:** Simple to apply and remove, saving valuable time and effort.
- **Versatile Use:** Suitable for a variety of vehicle sizes and shapes, making it an essential tool for any auto body shop.

PRL67280

Overspray protective sheeting



Promask

PLSHOD-18 -18 x 750 White Masking Paper - Box

PLSHOD-24 - 24 x 750 White Masking Paper - Box

PLSHOD-36- 36 x 750 White Masking Paper - Box

The white paper maintains true lighting conditions during painting, ensuring accurate color representation. Not only is it stronger than traditional blue paper, but its thinner profile allows for superior conformity to tight curves without sacrificing durability. Experience unparalleled precision and performance with our Promask white masking paper.

Ask your Color Compass representative for pricing.

www.colorcompass.com



Color Compass Corporation

PRO Sand®
COLLISION REPAIR ABRASIVE PRODUCTS

ProWipes



PRWP-45840
Heavy Duty Maintenance
Wipes - 12" x 15"

- Super strong & absorbent
- Stands up against dirt, grease & grime
- Alternative to shop towels



PRWP-41430
Premium Booth Wipes - Wash & Dry

- Strong & Durable
- Low lint
- Absorbent
- Will not bleed

PRWP-43670
Performance Surface Pre
Wipes - 15"x 12.5"



- Lightweight
- Durable & longer lasting
- Soft on hands
- Alternative to shop towels

PRWP-41000
Ultra Soft Maintenance
Wipes - 10"x 12"



- 2X more absorbent
- Durable & longer lasting
- Soft on hands
- Alternative to shop towels

Ceramic



- QUICK-CHANGE DISCS
- AVAILABLE IN 2" & 3"
- PREMIUM CERAMIC ALUMINA

2" TR Discs

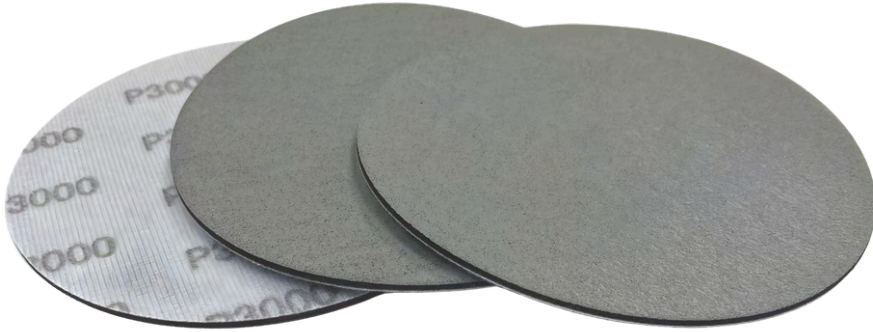
- PRA80236** 36 Grit Box of 25
- PRA80250** 50 Grit Box of 25
- PRA80260** 60 Grit Box of 25
- PRA80280** 80 Grit Box of 25

3" TR Discs

- PRA80336** 36 Grit Box of 25
- PRA80350** 50 Grit Box of 25
- PRA80360** 60 Grit Box of 25
- PRA80380** 80 Grit Box of 25

Ask your Color Compass representative for pricing.

www.colorcompass.com



PRA83030 3" 3000g Velcro Foam Abrasive - Box of 15

PRA86030 6" 3000g Velcro Foam Abrasive - Box of 15

EuroTape[™]



Yellow

ERO4034 - 18mmx55m - 3/4" - 48/CS

ERO4150 - 36mmx55m - 1.5" - 24/CS

ERO4200 - 48mmx55m - 2" - 24/CS

Features:

- Flexible Application: Adheres smoothly to curved and irregular surfaces without lifting or tearing.
- UV Resistant: Offers protection against UV rays for up to 3 days.
- Low Profile Edges: Thin backing ensures low profile paint edges and works effectively around corners, providing sharp and clean paint lines.
- Paint Compatibility: Compatible with both solvent and waterborne paints.



Green

Features:

- Ultra Sharp Tape Lines
 - Quality Adhesion on Curves
 - High Temperature
 - UV Resistant
 - Water Resistant
 - Ideal for Water & Solvent Paint Systems
- ERO6034** - 18mmx55m - 48/CS
ERO6150 - 36mmx55m - 24/CS
ERO6200 - 48mmx55m - 20/CS



**Color Compass
Corporation**

PRO Sand®
COLLISION REPAIR ABRASIVE PRODUCTS

Ceramic

Ceramic Grains

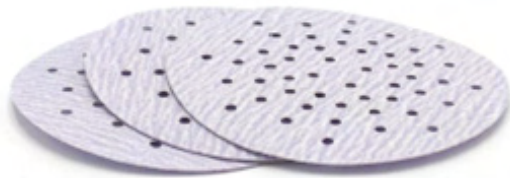
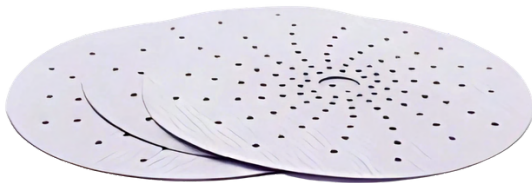
- Advanced quick cut & superior longevity

Holed Pattern

- Reduces heat and maximizes dust extraction

Improved Stearate

- Reduces loading & extends life



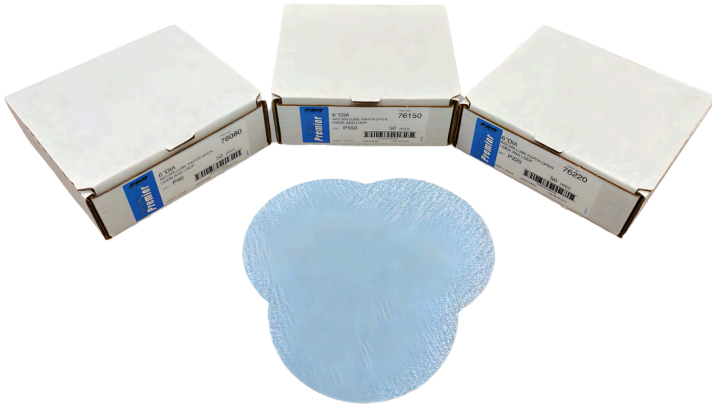
PRA83080 3" P80 VEL/VAC Ceramic Discs PKG/50
PRA83120 3" P120 VEL/VAC Ceramic Discs PKG/50
PRA83150 3" P150 VEL/VAC Ceramic Discs PKG/50
PRA83180 3" P180 VEL/VAC Ceramic Discs PKG/50
PRA83220 3" P220 VEL/VAC Ceramic Discs PKG/50
PRA83320 3" P320 VEL/VAC Ceramic Discs PKG/50
PRA83400 3" P400 VEL/VAC Ceramic Discs PKG/50

PRA81080 2.75x13xP80 VEL/VAC Ceramic 13 Yards
PRA81120 2.75x13xP120 VEL/VAC Ceramic 13 Yards
PRA81150 2.75x13xP150 VEL/VAC Ceramic 13 Yards
PRA81180 2.75x13xP180 VEL/VAC Ceramic 13 Yards
PRA81220 2.75x13xP220 VEL/VAC Ceramic 13 Yards
PRA81320 2.75x13xP320 VEL/VAC Ceramic 13 Yards
PRA81400 2.75x13xP400 VEL/VAC Ceramic 13 Yards

PRA86010 6" P1000 VEL/VAC Ceramic Discs PKG/50
PRA86080 6" P80 VEL/VAC Ceramic Discs PKG/50
PRA86120 6" P120 VEL/VAC Ceramic Discs PKG/50
PRA86150 6" P150 VEL/VAC Ceramic Discs PKG/50
PRA86180 6" P180 VEL/VAC Ceramic Discs PKG/50
PRA86220 6" P220 VEL/VAC Ceramic Discs PKG/50
PRA86320 6" P320 VEL/VAC Ceramic Discs PKG/50
PRA86400 6" P400 VEL/VAC Ceramic Discs PKG/50
PRA86500 6" P500 VEL/VAC Ceramic Discs PKG/50
PRA86600 6" P600 VEL/VAC Ceramic Discs PKG/50
PRA86800 6" P800 VEL/VAC Ceramic Discs PKG/50

Ask your Color Compass representative for pricing.

www.colorcompass.com



6" Velcro Sanding Discs (50 Discs Per Box)

PRA76080 6x0xP80+VELCRO A/O Discs
PRA76150 6x0xP150+VELCRO A/O Discs
PRA76180 6x0xP180+VELCRO A/O Discs
PRA76220 6x0xP220+VELCRO A/O Discs
PRA76320 6x0xP320+VELCRO A/O Discs
PRA76400 6x0xP400+VELCRO A/O Discs
PRA76500 6x0xP500+VELCRO A/O Discs
PRA76600 6x0xP600+VELCRO A/O Discs
PRA76800 6x0xP800+VELCRO A/O Discs



PSA Sheet Roll

PRA71080 2.75x25yds P80+PSA A/O Sheet
PRA71120 2.75x25yds P120+PSA A/O Sheet
PRA71150 2.75x25yds P150+PSA A/O Sheet
PRA71180 2.75x25yds P180+PSA A/O Sheet
PRA71220 2.75x25yds P220+PSA A/O Sheet
PRA71320 2.75x25yds P320+PSA A/O Sheet
PRA71400 2.75x25yds P400+PSA A/O Sheet

Premier

- Premium Heat-Treated Grain
- Quick cut, extended life, and consistent finish from start to end
- Vinyl Reinforced Backing
- Provide a Flexible yet tough paper
- Improved Stearate
- Reduces loading and extends Life



**Color Compass
Corporation**



Get Clipped...

KUBE Clip Carts provide a highly organized, technician-ready solution for managing clips, fasteners, and related repair materials in collision-repair facilities. **Designed with a heavy-duty construction, customizable bin layouts, and a tight shop footprint, these carts help shops maintain superior organization and quick access to high-usage components. With multiple cart formats and kit configurations** - including domestic, import, balanced, DFR, and necessity kits - they ensure technicians **always have the correct assortment of clips, rivets, electrical items, bulbs, and cable ties on hand, reducing downtime and eliminating parts-hunting inefficiencies.**

Integrated with the KUBE Inventory Management System, clip carts benefit from automated receiving, barcoded tracking, accurate invoicing, real-time usage reporting, and controlled inventory levels—helping facilities lower material waste, avoid stockouts, and improve overall profitability through data-driven material management.



The newest addition to the KUBE Inventory Management System. Superior organization & itemization for individual RO's, brought to you in packages that make sense. Get organized, save money.

Ask your Color Compass representative for pricing.

www.colorcompass.com



**Color Compass
Corporation**

Inventory Management

The Kube Inventory Management System is an industry-leading platform designed to give collision repair facilities total control over materials while driving measurable cost containment. Through advanced barcoded material management, automated receiving, real-time invoice pricing, and seamless integration with distributor systems, Kube eliminates manual updates and reduces errors for greater operational efficiency.

Its built-in analytics deliver clear visibility into consumption by department, live inventory valuation, and KPI-driven targets—turning data into actionable intelligence that helps facilities reduce waste, improve profitability, and streamline processes with confidence.

ColorPASS

KUBE ColorPASS fully interfaces with the color software and smart-scales in the paint mixing room. The ColorPASS system will automatically **track your liquid consumption to the gram**, and place orders as your technicians are mixing over the scale. ColorPASS will also enable you to **analyze specific costing and profitability data** at any level of complexity.

KUBE Smart Scanner

Smartphone cameras or music player aren't built for barcode scanning — that's why the KUBE scanner delivers the same scanning technology that drives many of the world's field service teams. **You get instant and effortless point-and-shoot capture of any electronic or printed barcode** in virtually any condition - no aiming and no waiting.

The KUBE scanner features all-day power and is designed for a rugged shop environment.

Business Intelligence to Drive Behaviour and Profitability

With KUBE analytics built right into the system, materials and labour profitability will no longer be a guessing game. KUBE's advanced business intelligence is essential for any facility that wants to drive performance and profitability.

Ask your Color Compass representative for pricing.

www.colorcompass.com



3M™ Hookit™ Flexible Foam Abrasive Discs & Sheets



Achieve a more quickly matte finish faster while feeling comfortable working closer to edges and bodylines with random orbital sanders.

3M™ Hookit™ Flexible Foam Abrasive Discs combine flexible aluminium oxide abrasives with a soft foam backing to create a high-performing, versatile blending abrasive for dry or wet sanding, whether by machine or by hand.

6 inches
20 Discs/Case
4 Cartons/Case

5 inches
20 Discs/Case
4 Cartons/Case

3 inches
20 Discs/Case
4 Cartons/Case

Grade	3M Part No.	3M Part No.	3M Part No.
P400	33538	33555	33557
P600	33539	33556	33558
P800	33540	33545	33550
P1000	33541	33546	33551
P1200	33542	33547	33552
P1500	33543	33548	33553
P2000	33544	33549	33554

Recommended Grades for Use

Grade	Applications
P400	Final DA primer refinement before paint application, plastic bumper cover sanding, prep for basecoat and clear coat application
P600	Final primer sanding for critical colours and refining previous sanding scratches
P800	Blend sanding and final primer sanding for critical colours
P1000	Blend sanding while retaining clear coat texture (uniform matte finish)
P1200	Preparation for clear coat
P1500	Defect removal - clear coat rectification
P2000	Minor defect removal - clear coat rectification



The soft foam construction conforms to irregular surfaces, ensuring a uniform and consistent finish, especially around panel edges and corners.

Confidently sand body lines while evenly applying pressure across the pad, helping ensure fewer chances of scratch unevenness from finger pressure.

5.5 in x 6.8 in
10 Sheets/Case
6 Cartons/Case

Grade	3M Part No.
P400	33531
P600	33532
P800	33533
P1000	33534
P1200	33535
P1500	33536
P2000	33537

U-HOOKD



Color Compass
Corporation



The EZ-sealer is a flexible applicator tip designed to give you complete control when applying seam sealer. Its unique design features two horn-shaped portions at the top - allowing you to break off the left or right side depending on which direction you're working.

EZ - Sealer UH DU-002302 EZ Sealer Green Tips (20 Tips)

The Cup Stacker is a versatile storage solution for empty paint cups, designed to hold small, medium, and large sizes. Its updated adjustable sleeve allows you to set the desired height without the need for screws. Capable of storing 50-75 cups, it features a strong magnetic backing that attaches securely to metal surfaces.

UH DU-001203 Cup Stacker Black W/Red Sleeve



Fold Me - Tape Edger

Tape Edge is a precision masking tool that helps auto body painters eliminate hard tape lines for a cleaner finish. It works with 19 mm masking tapes, folding one edge by 4 mm to create a soft transition—ideal for curves, corners, hoods, trunks, and door jambs.

UH DU-001500 19mm

Razor Buddy is the sleek, magnetic solution for keeping your razor organized and always within reach. Featuring a strong, non-damaging magnetic backing, it securely holds your razor in place without scratching or slipping.

UH DU-001101 Razor Buddy Black



"Hold Me" hose holder is the ultimate solution for organizing your workspace. Built with a durable aluminum tube for optimal airflow, it securely holds air tools, air blowers, and hoses in place. Featuring powerful magnets, it attaches firmly to metal surfaces, keeping your equipment easily accessible and your workspace clutter-free.

UH DU-000683 Hold Me - Hose Holder

Efficiently organize your aerosol can inventory with these versatile holders, crafted from lightweight and durable material. Easily mountable with a magnetic backing, these holders ensure a secure attachment to your workspace, and they can also be connected to each other for added convenience.

UH DU-000582 Blue Aerosol Can Mount - Magnetic



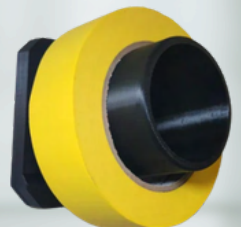
The Spray Bottle Mount is designed to securely hold spray bottles with nozzles up to 3 inches in length on any metal surface. Featuring strong magnets, it can support up to 35 pounds of liquid, making it perfect for heavy-duty use.

UH DU-001302 Spray Bottle Mount



UH DU-000481 Tape Holder

Tape Mount is a magnetic, space-saving solution designed to hold a variety of tape sizes securely and within reach. Its strong magnetic backing attaches firmly to metal surfaces, keeping your workspace organized and your tape rolls easily accessible.



Ask your Color Compass representative for pricing.

www.colorcompass.com



Color Compass Corporation



SHO6111099L	Large Gray Classic Paint Suit
SHO6111099M	Medium Gray Classic Paint Suit
SHO6111099S	Small Gray Classic Paint Suit
SHO6111099XL	XL Gray Classic Paint Suit
SHO6111099XXL	XXL Gray Classic Paint Suit
SHO6113099L	Large Gray PRO Anti-Static Paint Suit
SHO6113099M	Medium Gray PRO Anti-Static Paint Suit
SHO6113099S	Small Gray PRO Anti-Static Paint Suit
SHO6113099XL	XL Gray PRO Anti-Static Paint Suit
SHO6113099XXL	XXL Gray PRO Anti-Static Paint Suit
SHO6121000L	Larg Black Original Shoot Paint Suit
SHO6121000M	Med Black Original Shoot Paint Suit
SHO6121000S	Smal Black Original Shoot Paint Suit
SHO6121000XL	XL Black Original Shoot Paint Suit
SHO6121000XXL	XXL Black Original Shoot Paint Suit

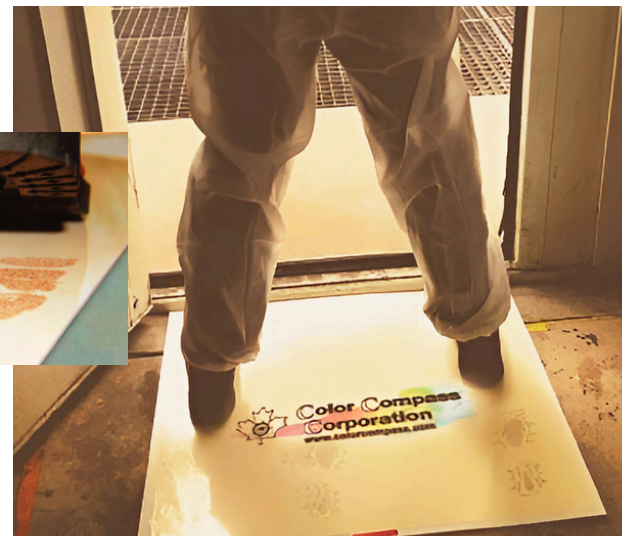
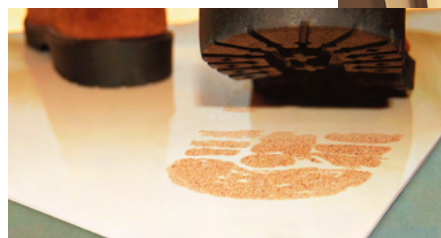


SAS66516	Raven Nitrile Gloves PF-Small	BOX/100
SAS66517	Raven Nitrile Gloves PF-Med	BOX/100
SAS66518	Raven Nitrile Gloves PF-Large	BOX/100
SAS66519	Raven Nitrile Gloves PF-X Large	BOX/100
SAS66520	Raven Nitrile Glove PF XX Large	BOX/100



PFM2531-31-W41 Adhesive Mats & Frame

- Keeps floors clean from shop to booth, and shop to office.
- Low profile mat with 30 sheets, comes with numbered tabs.
- Consistent adhesive coverage.
- Strong, durable backing



Refills:
PFMPS-2430-34-C (Pack of 30)

Ask your Color Compass representative for pricing.

www.colorcompass.com



Color Compass Corporation

It's about the details...

Rims-Painted Surfaces



ACM845-032 - Fall out

Tires



ACM832-05 - Degreaser (Clean All)

Wash



ACM803-05 - Car Wash Soap

Dry Engine Wash



ACM705-032 - Free Shine Silicone Free

Interior



ACM807-032 - Vinyl Fab (interior cleaner)

Interior Dressing



ACM700-032 - Interior Dressing

Glass Cleaner



ACM713-05 - Glass Cleaner

Tire Dressing



ACM704-032 - GO Shine (High Gloss Tire Shine)

Ask your Color Compass representative for pricing.

www.colorcompass.com



PLASTIC REPAIR | SEAM SEALERS | METAL BONDING

- Created using the most advanced technology available today
- Products can handle many different applications, thus minimizing the need for a large inventory of product to be kept on-hand
- Urethane Adhesives are the best choice for plastic repairs, easy to sand and will not lift, roll up or shrink
- Epoxy Adhesives are ideal for undetectable SMC repairs because they are easy to sand and will not lift or roll up
- Epoxy Adhesives are optimal for metal bonding due to their strength and corrosion protection capabilities



PRODUCT USAGE GUIDE



METAL BONDING	METAL BONDING - STRUCTURAL	COMPOSITE PLASTIC REPAIR - BONDING	COMPOSITE PLASTIC REPAIR - STRUCTURAL	COMPOSITE PLASTIC REPAIR - COSMETIC	FLEXIBLE PLASTIC REPAIR - STRUCTURAL	FLEXIBLE PLASTIC REPAIR - COSMETIC	636425-	DESCRIPTION	COLOR	WORK TIME	HANDLING/CLAMP TIME	SANDING TIME	PAINT TIME
EPOXY ADHESIVES													
■		■	■		■		06418	Panel Bonder – 30 minute	Black	30 min	2 hours	3 hours	
■		■	■		■		06421	Panel Bonder – 90 minute	Black	90 min	4 hours	8 hours	
■	■						06427	Impact Toughened	Purple	90 min	120 min		
				■		■	06412	Repair and Filler	Purple	5 min		15-30 min*	15-30 min*
URETHANE ADHESIVES													
		■	■		■		04647	45 second	Opaque	45 sec	2-1/2 min	5 – 7 min*	
		■	■		■		04615	1 minute	Black	1-1/2 min	7 min	12 – 20 min*	1 hour
		■	■		■		04616	5 minute	Black	7 min	15 min	45 min	2 hours
		■	■		■		04617	15 minute	Black	20 min	45 min	90 min	3 hours



Color Compass Corporation



SAINT-GOBAIN

SPEEDGRIP™

STRUCTURAL ADHESIVES

BONDING AND REPAIR ADHESIVES



One Line Does It All

Whether you're working on steel, aluminum, SMC, FRP, fiberglass, rigid plastic, semi-rigid plastic, flexible plastic or panel bonding, our line of Norton SpeedGrip Structural Adhesives gets the job done.

- Urethane Adhesives
- Epoxy Adhesives
- Seam Sealers
- Accessories

PART #	QUANTITY PKG/CASE	DESCRIPTION	SIZE	COLOR	OPEN TIME	WORK TIME	HANDLING/CLAMP TIME	SANDING TIME	PAINT TIME	CURE TIME	OEM APPROVALS
URETHANE ADHESIVES											
63642504647	1/6	Adhesive 45 second	220 ml 1:1	Opaque	30 sec	45 sec	2½ min	5-7 min*		24 hours	
63642504615	1/6	Adhesive 1 minute	215 ml 1:1	Black	1 min	1½ min	7 min	12-20 min*	1 hour	24 hours	
63642504616	1/6	Structural Adhesive 5 minute	215 ml 1:1	Black	5 min	7 min	15 min	45 min	2 hours	24 hours	
63642504617	1/6	Structural Adhesive 15 minute	215 ml 1:1	Black	15 min	20 min	45 min	90 min	3 hours	24 hours	
63642504625	1/12	Adhesion Promoter - Aerosol	333 grams								
EPOXY ADHESIVES											
63642506412	1/6	Repair and Filler	220 ml 1:1	Purple		5 min		15-30 min*	15-30 min	6-8 hours	
63642506418	1/6	Panel Bonder	220 ml 1:1	Black		30 min	2 hours	3 hours		24 hours	
63642506421	1/6	Panel Bonder	220 ml 2:1	Black		90 min	4 hours	8 hours		24 hours	
63642506427	1/6	Impact Toughened Structural Adhesive	220 ml 2:1	Purple		90 min	120 min			10 hours	GM: Repair impact-resistant joints
EPOXY SEAM SEALERS											
63642597120	1/6	Seam Sealer	220 ml 1:1	Black		8-10 min		30 min	30 min	2 hours	
63642506402	1/6	Seam Sealer - Controlled flow	220 ml 1:1	Cream		5-10 min		30 min	30 min	2-3 hours	
63642597121	1/6	Seam Sealer Self-Leveling	220 ml 1:1	Black		5-10 min		30 min	30 min	2 hours	
63642506398	1/6	Bare Metal Seam Sealer	220 ml 1:1	Gray		10-15 min			45 min	6-8 hours	
ACCESSORIES											
63642541399	1/1	Pneumatic Gun	1:1 and 2:1								
63642541400	1/1	Manual Gun	1:1 and 2:1								
63642504628	6/60	Mixing Tips 24 element	For 220 ml	Green							
63642504632	1/6	Reinforcing Tape	2" x 65'								

Ask your Color Compass representative for pricing.

www.colorcompass.com



Revolutionary Wise 2K® Technology

2-component, 1-compartment, unlimited pot-life Car-Rep 2K features ground-breaking patented Wise 2K® Technology with a deactivated hardener and the resin in the same compartment. Easy to use and always ready, you simply shake and spray instead of mixing or activating. The hardener activates when sprayed so you can use the whole can over years. Featuring both epoxy and polyurethane technologies Car-Rep 2K delivers everything you need for a durable finish with exceptional adhesion and resistance to corrosion, chemicals, UV or scratching.

Car-Rep 2K Epoxy eCoats DTM 400ml

The invisible bottom layer is key to long-lasting results. Achieve ultimate protection - corrosion resistance and strong adhesion - from our high-performance primers and underbody coatings. For pro results and optimum corrosion resistance on bare metal choose 2-component epoxy with unlimited pot life. The high-quality acrylics will do the trick for lighter projects.

- CRAC240200 Tan
- CRAC240203 Field Drab
- CRAC240602 Olive Green
- CRAC240910 White
- CRAC240920 Grey



Car-Rep 2K Polyurethane Clear Coat High Gloss 11.3oz/320g

Car-Rep® 2K Polyurethane Clear Coat forms a strong and extremely durable crystal clear chip, chemical and UV resistant film. It can be applied over solvent or waterborne base coats. Revolutionary Wise 2K® technology delivers 2K OEM performance without the worry about premature hardening in the can. Features superior gloss retention and quick chemical resistance. High quality blendability and quality spray and flow.

CRAC2200 2K Clear Coat

US Spraypaint Car-Rep Spot Blender 310gr

Car-Rep Spot Blender is an aerosol blending mixture that provides seamless edge transitions for an invisible repair. Especially developed for 2K top coats and clear coats. The Spot Blender is used immediately after the topcoat or clear coat is applied.

CRAC2250CA Spot Blender





Color Compass Corporation

iBrid Beta HLR Mini Polisher

RUPHLR75/BETA

Kit contains:

- 1-HLR75
- 1-Charger
- 2-Battery Pack
- (1) 9.DA100H D-A COARSE Foam Polishing Pad
- (1) 9.DA100M D-A FINE Foam Polishing Pad
- (1) 9.BW100H D-A COARSE Wool Polishing Pad
- (1) 9.BW100M D-A FINE Wool Polishing Pad
- (1) 9.DACOARSE250 D-A COARSE Polishing Compound 250mL
- (1) 9.DAFINE250 D-A FINE Polishing Compound 250mL
- (1) 9.BF9060 Yellow Micro ber Cloth
- (1) 9.BF9050 Blue Micro ber Cloth



iBrid HLR21 Basic Kit

RUPHLR21/CB2/BAS

Kit contains:

- 1x Bigfoot iBrid HLR15 Tool
- 2x DA Intermediate Foam Pads
- 2x DA Fine Foam Pads
- 2x Coarse Wool Pads
- 2x Fine Wool Pads
- 1x DA Coarse Polishing Compound
- 1x DA Fine Polishing Compound
- 2x Rechargeable Batteries
- 1x Dual Battery Charger



NEW! Orbital mini sander with iBrid technology STB Kit

PURE PORTABILITY. TOTAL CONTROL.



RUPHSE73L/STB

RUPES introduces the new HSE73L Orbital Mini Sander, a **high-performance tool designed for precision sanding on large surfaces**. Featuring a 70x198mm backing plate, this tool offers outstanding maneuverability and balance for effortless sanding in any applications. The HSE73L features iBridTechnology, allowing you to **choose between cordless operation with battery power or continuous use with the iBrid Power Adapter**.

With a self-extraction system and RUPES GREEN TECH filter, it ensures clean, dust-free work, maximizing efficiency. Compatible with the 18V 2.5Ah Lithium-ion battery, the HSE73L provides up to 45 minutes of continuous operation and a fast 35-minute recharge.

The ideal solution for your sanding needs—precise, versatile, and powerful. Excellent for putty and filler!



GREEN TECH FILTER

The new HSE73L iBrid Mini Sander can be used without an external extraction unit by connecting the patented RUPES GREEN TECH filter. This solution ensures maneuverability, balance, and precise sanding while collecting dust from wood, composites, metal, plaster, and more. The polyester filter provides higher efficiency and durability than traditional ones, with clean air output. A central rotor and cyclone effect prevent clogging, while the large surface increases capacity. Secure coupling is ensured by a shaped rubber opening and bayonet fitting for safe dust containment.

RUPH80436C

Ask your Color Compass representative for pricing.

www.colorcompass.com



**Color Compass
Corporation**



HAND TOWEL



SCA552538
Tork PeakServe® Mini
Continuous Hand Towel
Dispenser Black



SCA659028A
Tork® Dispenser



SCA105065
Tork Advanced PeakServe
Continuous Hand Towel

SCA121202
Tork Advanced Soft
Centerfeed Hand Towel

SOLVENT WIPER TOWEL



SCA6540281
Tork Folded Wiper/
Cloth Dispenser



SCA192480A
Tork Low-Lint
Cleaning Cloth, Top-Pak



SCA571508
Tork Liquid Soap
Dispenser



SCA400031
Tork Extra Mild
Liquid Soap

**TOILET
PAPER**



SCA5555290
Tork Twin Mini Jumbo Bath
Tissue Roll Dispenser



SCA12024402
Tork Advanced Mini
Jumbo Bath Tissue Roll

Ask your Color Compass representative for pricing.

www.colorcompass.com



Car-O-Liner® is synonymous with innovation thanks to the development of its first alignment bench, setting the stage for the company's remarkable journey of growth.

Today, Car-O-Liner® stands as **the world's leading provider of high-quality, technologically advanced collision repair equipment for the automotive aftermarket**, with a presence in more than 70 countries.



PRO-CART

PRO-Carts are designed to enhance efficiency and organization in various work environments. These carts feature wire mesh adjustable folding shelves, allowing for flexible storage solutions that can be tailored to specific needs.

With a robust 150 lb capacity, they can handle a variety of parts and tools. The panel trains and extending arms provides additional versatility, making it easier to transport and access items. (Panel trains and extending arms sold separately)

PLTPARTSCART-2 - Parts Cart

PLTPARTSSTAND - Yellow Bumper Scissor Stand

The PRO-STAND parts stand is engineered for heavy-duty use, boasting an impressive 500 lb capacity. This makes it ideal for handling substantial parts and equipment. Its design includes flexible feet at the base, which provide exceptional stability on grate flooring and in paint booths. This ensures that the stand remains steady and secure, even in environments where the flooring may be uneven or slippery.

Pro Stand Feet for Yellow Bumper are included!



Ask your Color Compass representative for pricing.

www.colorcompass.com



**Color Compass
Corporation**



Lithium-ion Battery Fire Extinguishers

With the rise of devices powered by lithium batteries, fire safety challenges continue to evolve. E-FireX is leading the way in developing advanced, environmentally friendly solutions to these new risks.



EFXEXT2LR
EFXEXT6LR
EFXEXT9LR

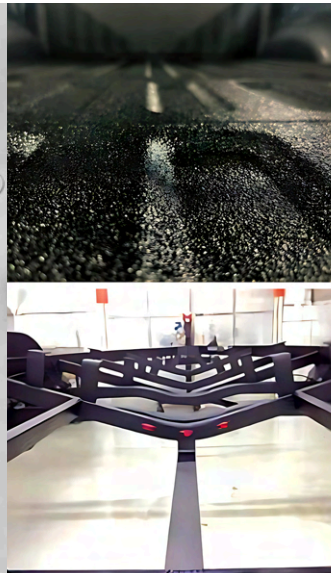
2LT Refillable Extinguisher
6LT Refillable Extinguisher
9LT Refillable Extinguisher

EA
EA
EA

More information...
[view...https://colorcompass.com/new-product-e-firex-lithium-battery-fire-extinguishers/](https://colorcompass.com/new-product-e-firex-lithium-battery-fire-extinguishers/)

Bedliner

by  Color Compass Corporation



Bedliner by Color Compass is a nationwide premium brand that sets an unparalleled standard for quality dealer support.

Bedliner is a spray-on, flexible and tough membrane that delivers excellent moisture and chemical resistance. The textured surface exhibits excellent adhesion to most substrates, and cures extremely fast!

Ask your Color Compass representative for pricing.

www.colorcompass.com



Color Compass Corporation



IRT715070 IRT UV SmartCure

Operational safety in every detail is IRT top priority. SmartCure comes with exchangeable, high quality, long life 18 V lithium-ion batteries. Peak light performance is maintained on a constant high level until the display indicates battery change, no risk of power loss due to discharged battery. The battery charger is hardwearing and reliable. It holds charge over time without risk of overcharging.

-Excellent curing result in seconds - No risk of power loss or over charging - Exchangeable batteries eliminate down-time - Peak light performance held at max throughout battery cycle



IRT800902 IRT UV SpotCure2

IRT UV SpotCure², next generation UV lamps from IRT. An unbeatable combination of power and curing size.

- UV SpotCure² - 3 TIMES MORE POWERFUL*
- Our bestselling UV LED range expands with power-packed SpotCure².
- An unbeatable combination of power and curing size.
- Taking operational safety and user comfort to a new level.
- *SpotCure¹ light effect 50 W, SpotCure² light effect 150 W.

UV-Technology

UV automotive paint repair offers significant advantages over conventional spot repair by dramatically reducing drying times through the use of a UV lamp, resulting in faster turnaround and lower labor costs; eliminating the need for a paint booth, making it a highly flexible and cost-efficient solution; generating less waste for improved environmental responsibility; and delivering precise, targeted repairs on minor damage—such as scratches and stone chips.



UVA Finishing Glaze Aqua SPM3680802

UVA Finishing Glaze Aqua is a universal 1K UV curable refinish putty used for automotive refinishing. This product is perfect for filling pinholes. The unique properties allow a complete and fast curing process in less than 60 seconds, depending on thickness applied. The high filling properties guarantee a superior quality result compared to any other product.



UV Clear SPM3680059

UV Clear for fast and long-term sealing of repairs and new paintwork. Requires UV-A equipment for curing. Best Option: UV-A Mercury Lamp UV-LED
Recommendation: UV-A LED lamp with 395nm wave length. UV LED alternative: UV-A LED with 365nm wave length will cure the clear depending on intensity and time of exposure.



Ask your Color Compass representative for pricing.

www.colorcompass.com



Color Compass Corporation

PRO SPOT
QUALITY WELDING SYSTEMS

The **IONSTAR®** is a tool designed for the painter who wants to eliminate static electricity from any material that is being readied for painting. The tool works on compressed air only, has no electrical input, no batteries, no charging devices. It can be used on all surfaces where electrostatic discharge is a problem - plastic, aluminum, or steel!

The **IONSTAR®** will remove static electricity from the workpiece for up to 40 minutes, though ideally, painting should be done within 15 minutes of application. Removing the static electrical charge from the workpiece keeps dust and other particles from collecting on the 'to be painted' surface and provides a cleaner and smoother finished painted surface.



BENEFITS

- Eliminate static and dust in seconds
- Drastically reduces contamination
- Greatly reduces dry edges
- Improves paint adhesion
- Reduces prep time before paint
- Improve metallic control for better color match
- Reduce additional chemicals and cleaner use
- Reduction of colorsand and polish time



PLASTIC WELDER - NP-3

The NP-3 Plastic Welder is very easy to use with a very short learning curve. The repair process is faster than any other plastic repair method. With the NP-3 you can create mounting tabs or repair broken tabs on headlight inserts, etc., even on plastics other than automotive parts. Often, a broken tab requires replacing an entire bumper which involves the possibility of aftermarket parts being installed.

The **PRO SPOT NG-15 Nitrogen Generator** is a valuable addition to the NP-3 Plastic Welder, replacing the need to buy nitrogen bottles, decreasing cycle time and unnecessary expense. Utilizing membrane separation technology to generate high purity nitrogen gas eliminating oxidation and providing a strong, clean plastic weld



FEATURES:

- Converts compressed air into 97%+ pure nitrogen
- No electrical or moving parts to fail
- Low maintenance costs
- Easy to install and maintain
- Eliminates impurities in welds

Ask your Color Compass representative for pricing.

www.colorcompass.com



BETTER DENT REMOVAL WITH VAC-U-PULL

Pro Spot's VAC-U-PULL Mobile Dent Pulling Tower is an innovative and powerful solution for fixing dents anywhere. This state-of-the-art tool is designed to make dent pulling easier, faster, and more efficient than ever before.

The VAC-U-PULL is engineered to be lightweight and easy to move, making it an obvious choice for body shops.



EASY-TO-USE

The revolutionary Pro Spot Ergo Lift Assist™ System (ELA) is the tallest and most versatile motorized boom mechanism for spot welding applications. Designed to reach higher (9'2.75m) and lower (60"/1.5m) than most conventional booms, the ELA makes spot welding any area on today's high reach / wide footprint vehicles accessible and ergonomically friendly.

- The tool balancer and pivot arm are uniquely designed to make lifting and holding the weld gun light and easy, no matter the location on the vehicle.
- Muscle strain is reduced and injuries are prevented due to the ergonomic design and functionality of the ELA. As a result, job performance and satisfaction are significantly improved.
- The ELA is powered by either wall outlet or battery power, allowing mobility and boom control anywhere and anytime around the shop without being tethered to an inconvenient electrical outlet.



9' MAX HEIGHT, 5' MIN HEIGHT, 51" REACH



PIVOTS LEFT TO RIGHT 180°



FITS THROUGH DOORWAYS



EASY MOVEMENT BETWEEN VEHICLES



BALANCED AND SAFE



ERGONOMIC



DESIGNED FOR BOTH i5 & i5s SPOT WELDERS

Ask your Color Compass representative for pricing.

www.colorcompass.com



Color Compass Corporation

Part of the
Wesco
Group



www.colorcompass.com